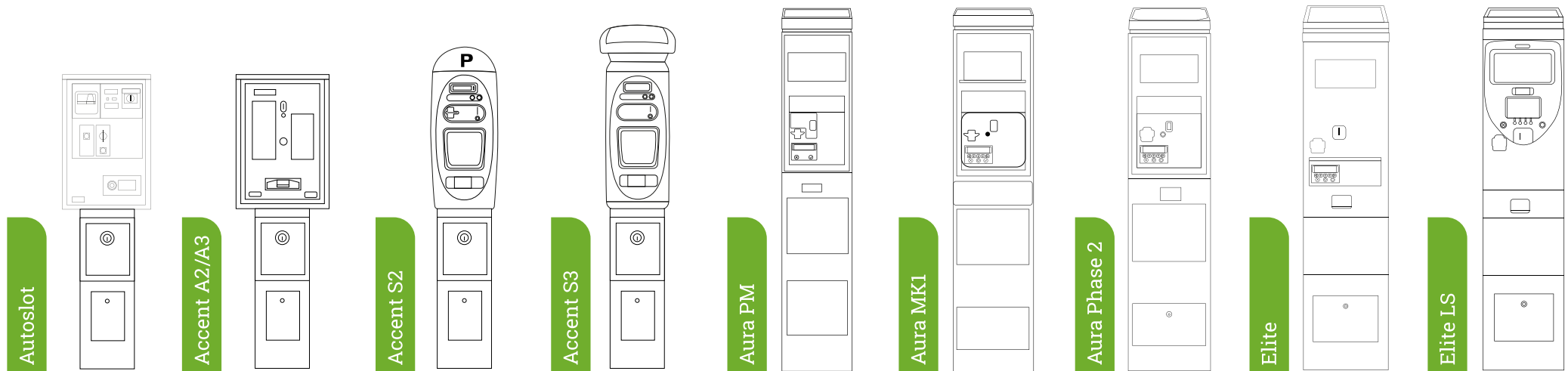


Validator Version Identifying Guide



Locating your validator

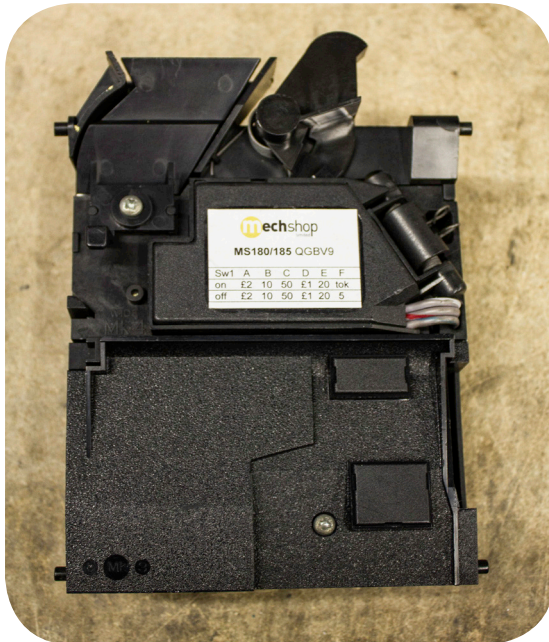
The position of the validator varies depending on the model of your parking terminal. Generally they are found in the lower part of the top half of that machine when you open the door. On METRIC's more recent models - the Aura MK 1.5, the Aura Phase 2, the Elite and the Elite LS - the validator is attached to the top door. If you are unsure on how to find your validator please consult your service or user manual. If you are unsure what model of machine you have, please use the reference guide below as a starting point:



Validator Types (Quick Reference)

Validator	8 Channel	16 Channel	Found in								Check CPU board
			Autoslot	Accent A2 / S2	Accent A3 / S3	Aura PM	Aura MK 1/1.5	Aura Phase 2	Elite	Elite LS	
M Series	●		●								
7 Series	●		●	●							●
770 V4 8ch	●		●	●							●
770 V4 16ch		●		●							
860 V4		●			●						
860 V5/16		●	●		●						
860 V5/19		●	●		●						
860 V6		●	●		●						
880 V5		●				●	●	●	●	●	
880 V6		●				●	●	●	●	●	
880 V7		●				●	●	●	●	●	

Validator Types



M-Series

Found in:
Autoslots

Example Identifier:
M Series



7-Series 8ch

Found in:
Autoslots, Accent A2/S2

Example Identifier:
700 8ch

Can be 700, 701, 771, 773



Validator Types

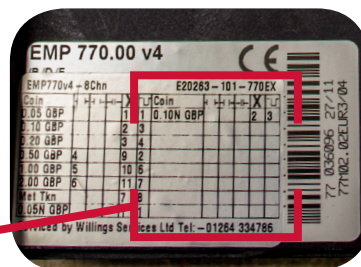


770 v4 8Ch

Found in:
Autoslots, Accent A2 & S2

Example Identifier:
EMP 770.00 v4 8ch

This is an 8 channel validator,
the right hand columns are empty.

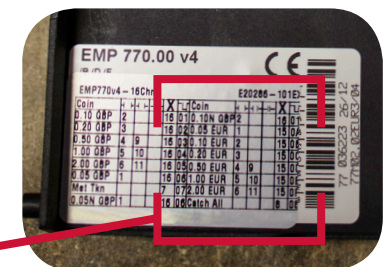


770 v4 16Ch

Found in:
Autoslots, Accent A2 & S2

Example Identifier:
EMP 770.00 v4 16ch

This is a 16 channel validator,
the right hand columns are full.



Validator Types



860

Found in:
Autoslots, Accent A3 & S3

Example Identifier:
EMP 860.04 v5/16

There are four versions:
860 v4; 860 v5/16; 860 v5/19; 860 v6.



880-Series

Found in:
Aura PM, Aura Mk1/1.5, Aura Phase 2,
Elite & Elite LS

Example Identifier:
EMP880v5

There are three versions:
880v5; 880v6; 880v7

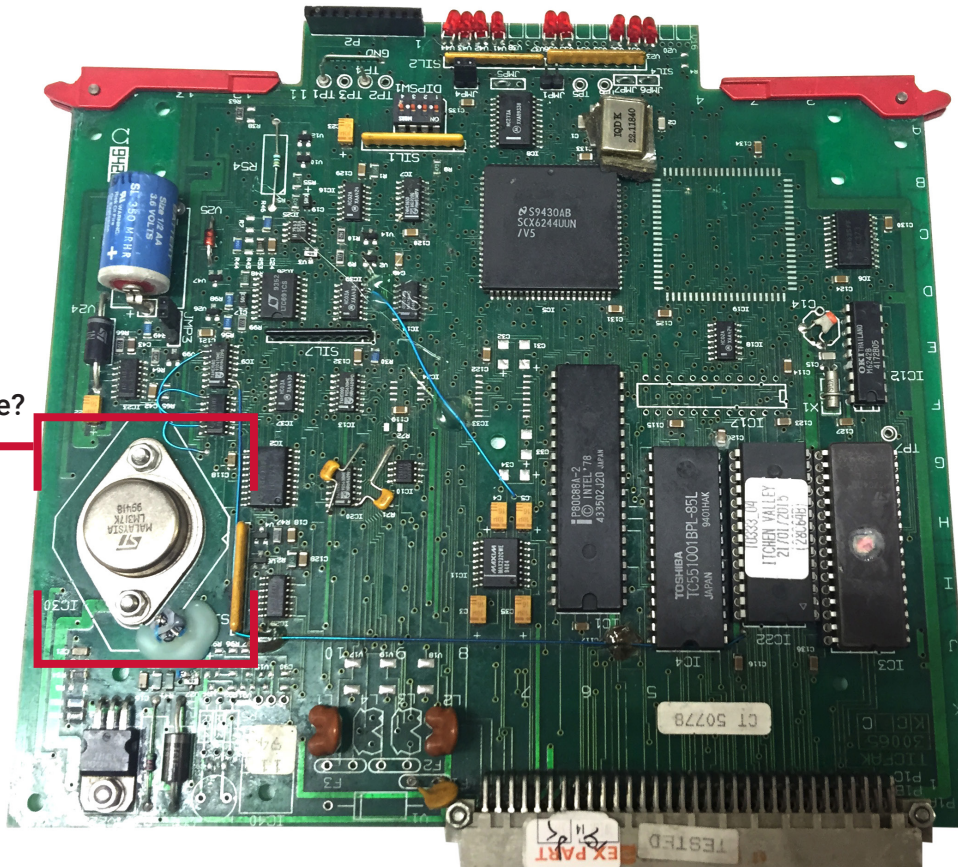


CPU Board

For all machines with a 7xx series (700, 701, 770, 771, 773.) 8 channel validator you must check the machine's main CPU board to see if it has one of these transistors on it.

- If it DOES then you have a 3MEG board
- if NOT then you have a 4MEG board.

Have one of these?
You have a
3MEG board



Logging your validator information

We have included an Excel template to make logging your validator information an easy process. The spreadsheet has a series of dropdown options: Machine Type, Validator Type, Version, Channels for 7 Series only; and Board Type for 7 Series 8 Channel Validators.

If a cell turns grey there is nothing more to complete for that line.

Please complete one line per machine.

Example:

Customer Name:		MET			Date:	
Complete this section from left to right, all white cells need to be completed.		Select from the drop down lists in each cell, starting from Machine Type and work right. If a cell turns grey or there is nothing in the list you do not need to complete it.				
Location	Customer Machine no.	Machine Type	Validator Type	Version	Channels for 7 Series only	7 Series 8 Channel Board Type
Market Square, New Town	MET01	Autoslot	773	v3	Channels 8	
High Street, New Town	MET02	Accent	770	v4	Channels 16	
High Street, New Town	MET03	Slim Accent	770	v4	Channels 8	3MEG
Old Street, New Town	MET04	Elite LS	880	v5		
Old Street, New Town	MET05	Accent	860	v5/19		

Send completed form to:
coinupgrades@metricgroup.co.uk

Questions? Advice?

coinupgrades@metricgroup.co.uk