



## Secure, Robust, Smart

The Universal represents the evolution of the parking machine incorporating smart payments and functionality with options for enhanced security and solar autonomy, in a robust and compact form.

## The hard-working smart terminal with enhanced security options

The Universal parking terminal from Metric has been developed with a global market in mind. It combines a simple and robust design with the latest smart technology. Added to this are options for enhanced security and solar power autonomy - making it a device suitable for any situation and or market.

### A PARKING TERMINAL FOR THE GLOBAL MARKET

It's called the Universal for a reason! Simply put, it is completely configurable to suit customer needs and uses across the world.

As standard, the Universal has something for everyone including coin and card payment solutions and enhanced coin security and touch screen technology.

### ENHANCED SECURITY

Machines that accept cash payments, have long been a target for criminals. While many users are moving to cashless options, there is still a requirement to provide a provision for cash payments.

The Universal is designed and manufactured featuring European-standard VDS-P4 safes and deposit boxes, within the Pay and Display Ticket Machines,

Plus, its enhanced security features including a robust cash box, have been created in conjunction with FORMAT Tresorbau GmbH.

Not only is the organisation regarded by many as one of the world's leading manufacturers of safes and strong boxes, but it is also a sister company of Metric's - so a trusted pair of hands.

The Universal benefits from electronic locking to the main compartment of the terminal as well as the vault. Access to either of these areas can only be achieved via specially encrypted electronic keys. If unauthorised access is detected, the Universal will emit a loud alarm and, if connected to the back office will signal an alert. To protect the terminal's power supply, the battery is now housed within the main compartment.

### SMART OPTIONS

The IK09 impact rated touch screen allows operators to simplify the user experience and include additional services that could be paid for at the same time as parking.

The high-definition LED touch screen includes advertising options, the ability to pay penalty charge notices (PCNs) and even book gym classes - the API integration is endless.

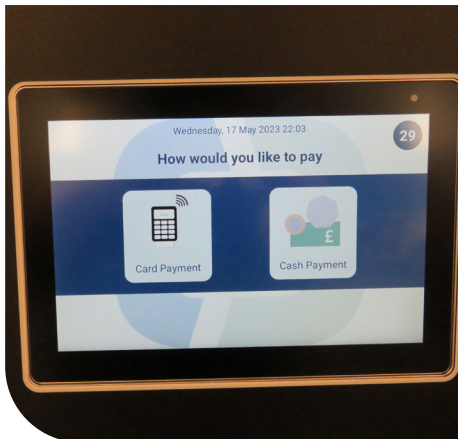
The Universal is also available using solar power which makes it suitable for many markets in Europe and across the world that have carbon reduction targets to meet.



The Universal is a versatile parking terminal and can be used for the following applications:

- ✓ Pay & Display Parking
- ✓ Pay-by-Plate Parking
- ✓ ANPR Integrated Payments
- ✓ Transport Ticketing Solutions
- ✓ Pay-by-Space Parking
- ✓ Barrier Controlled Payments
- ✓ Leisure Facility Payments
- ✓ Advertising Options

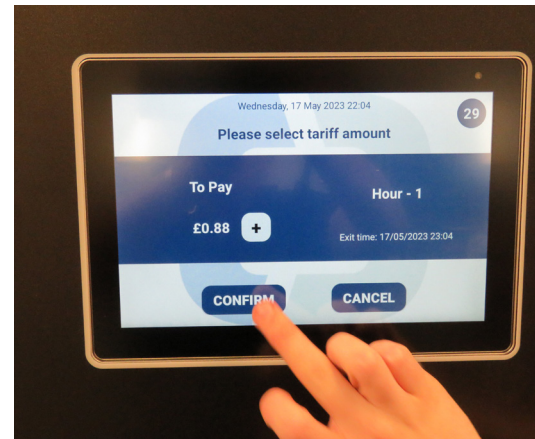




High-definition LED touch screen



QR/barcode scanner for free or discounted tariffs



User-friendly configurable journey

## PAYMENT OPTIONS

The Universal offers the latest EMV/ PCI P2PE compliant Chip, Pin and Contactless payment options, which supports mobile contactless bank payment technology (e.g. Apple Pay, Google & Wallet Pay).

The terminal can also accept coins and voucher scanning. The barcode scanner will accept both 1D and 2D (QR) barcodes either in printed or digital format (presented

on a mobile phone). This is suitable for retail, residential and membership schemes to offer free or discounted parking





## ADVANCED COMMUNICATION

The Universal utilises 4G mobile internet (2G fall back where available) or LAN communication to enable remote management via our back office software.

## THIRD PARTY INTEGRATION

Utilising Mi-Xchange with standard industry protocols (APIs) the Universal can seamlessly integrate with third party systems, including ANPR and back office enforcement products. The Universal adds value to a customer's parking operation by allowing centralisation of data for efficient processing.

## SMART FEATURES FOR SMART CITIES

-  The Universal accepts contactless and mobile payment systems like Apple and Google Pay
-  The HD touch screen enables additional revenue opportunities
-  Integrates with Metrics QR Payment application for parking and charging.
-  Enhance the parking experience by rewarding customer loyalty via the voucher scanning technology



Accepts contactless payments including Apple Pay and Google Pay



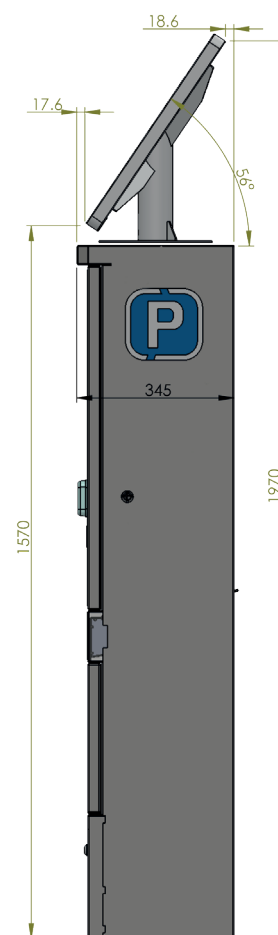
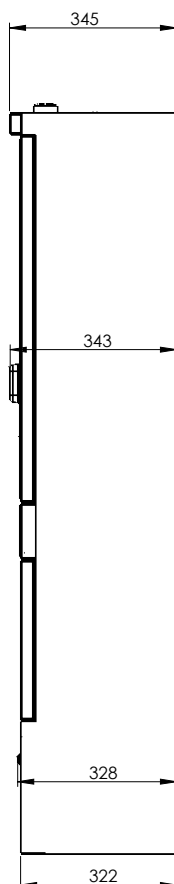
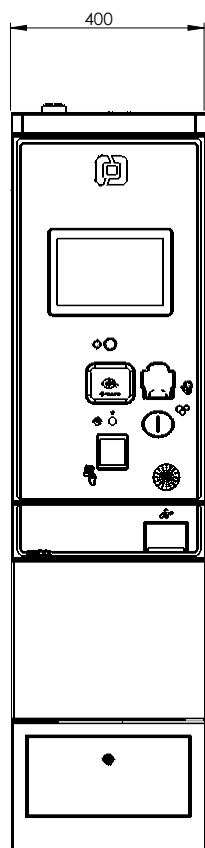
<b>EN 12414 Compliant</b>			
<b>Size (HxWxD)</b>		<b>Tickets</b>	
<ul style="list-style-type: none"> <li>1530mm x 400mm x 345mm (Mains)</li> <li>1970mm x 400mm x 345mm (Solar)</li> </ul>		<ul style="list-style-type: none"> <li>4,000 ticket capacity (roll)</li> <li>Thermal 8 dots/mm graphic printing</li> <li>Single ticket size 60mm x 60mm</li> </ul>	
<b>Display</b>		<b>Colours</b>	
<ul style="list-style-type: none"> <li>10.1 LED High Brightness LCD</li> </ul>		<ul style="list-style-type: none"> <li>Black</li> </ul>	
<b>Payment Options</b>		<b>Outer Case</b>	
<ul style="list-style-type: none"> <li>15 Channel Coin validator, multi-currency capacity</li> <li>Contactless only</li> <li>Chip and Contactless</li> <li>Chip and Pin and Contactless</li> <li>Potential for Smart Cards (Chip or RFID)</li> </ul>		<ul style="list-style-type: none"> <li>Stainless steel</li> </ul>	
<b>Scanner</b>		<b>Power</b>	
<ul style="list-style-type: none"> <li>Barcode scanner (QR Codes and vouchers)</li> </ul>		<ul style="list-style-type: none"> <li>100v - 240v mains</li> <li>Solar 30W</li> </ul>	
		<b>Operating Voltage</b>	
		<ul style="list-style-type: none"> <li>12v DC</li> </ul>	
		<b>Operating Temperature</b>	
		<ul style="list-style-type: none"> <li>-20°C to +60°C</li> </ul>	
		<b>Humidity</b>	
		<ul style="list-style-type: none"> <li>Up to 95% humidity, non-condensing</li> </ul>	
		<b>Cash Storage</b>	
		<ul style="list-style-type: none"> <li>6 litre coin box</li> </ul>	
		<b>Security</b>	
		<ul style="list-style-type: none"> <li>Electronic locking</li> <li>VDS-P4 safes and deposit boxes</li> </ul>	
		<b>Heater (mains only)</b>	
		<ul style="list-style-type: none"> <li>Standard - thermostatically controlled</li> </ul>	
		<b>Environment</b>	
		<ul style="list-style-type: none"> <li>90%+ recyclable ROHS compliant</li> <li>WEEE applicable</li> </ul>	
		<b>UKCA / CE mark</b>	

Front Mains

Side Mains

Front Solar

Side Solar



METRIC Group Ltd  
Metric House  
Westmead Industrial Estate, Westlea,  
Swindon, SN5 7AD  
T +44 (0)1793 647800

sales@metricgroup.co.uk  
www.metricgroup.co.uk

